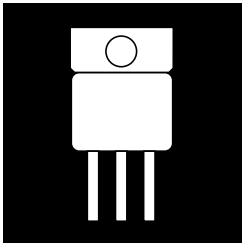


OM5204SC/RC/DC OM5206SC/RC/DC OM5219SC/RC/DC OM5235SC/RC/DC
 OM5205SC/RC/DC OM5218SC/RC/DC OM5220SC/RC/DC

HERMETIC JEDEC TO-258AA HIGH EFFICIENCY, CENTER-TAP RECTIFIER



30 Amp, 50 To 600 Volts, 35 To 50 ns trr

FEATURES

- Very Low Forward Voltage
- Very Fast Switching Time
- Hermetic Metal Package, JEDEC TO-258AA
- Low Thermal Resistance
- Isolated Package
- High Surge
- Available Screened To MIL-S-19500, TX, TXV And S Levels

DESCRIPTION

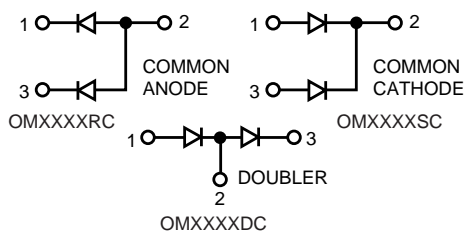
This series of products in a hermetic package is specifically designed for use at power switching frequencies in excess of 100 kHz. The series combines two high efficiency devices into one package, simplifying installation, reducing heat sink hardware, and the need to obtain matched components. These devices are ideally suited for Hi-Rel applications where small size and a hermetically sealed package is required. Common anode configurations are also available. Common cathode is standard.

ABSOLUTE MAXIMUM RATINGS (Per Diode) @ 25°C

Peak Inverse Voltage 50 to 600 V
 Maximum Average D.C. Output Current @ $T_C = 100^\circ\text{C}$ 15 A
 Non-Repetitive Sinusoidal Surge Current 8.3 ms 150 A
 Operating and Storage Temperature Range - 55° C to + 150° C

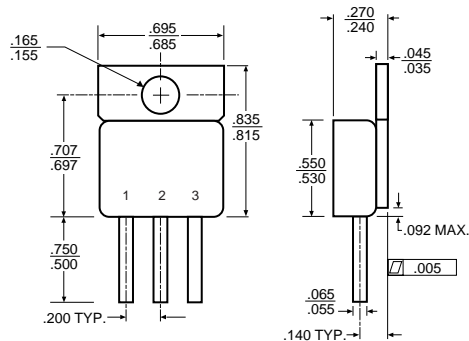
3.2

SCHEMATIC



Common cathode is standard. Contact the factory for performance characteristics for common anode and doubler.
 Z-Pak also available.

MECHANICAL OUTLINE



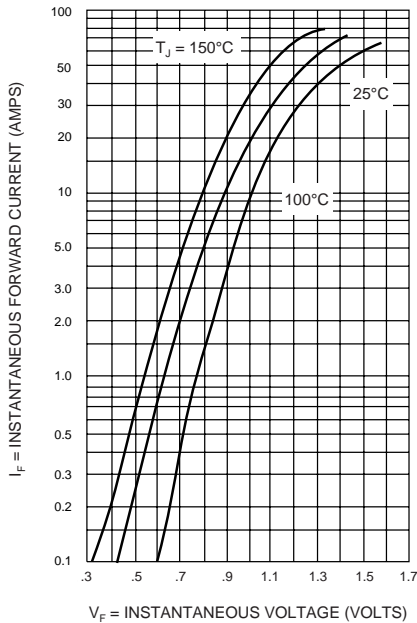
OM5204SC/RC/DC - OM5235SC/RC/DC

ELECTRICAL CHARACTERISTICS (Per Diode)

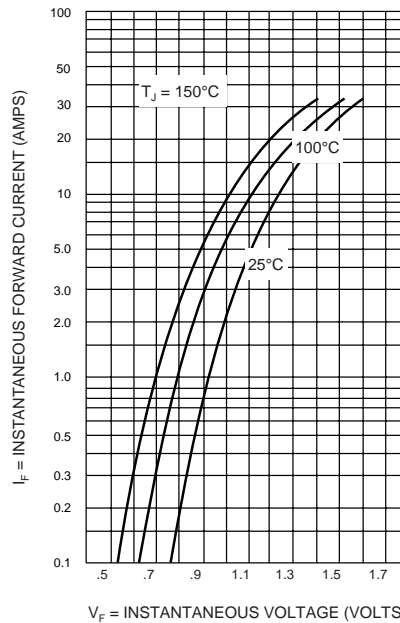
Type	PIV	Maximum Forward Voltage (Volts) @ ⁽¹⁾		Maximum Reverse Current @ PIV		Maximum Reverse Recovery Time (2)	Maximum Thermal Resist. R _{qJc}
		T _j = 25° C	T _j = 100° C	T _j = 25° C	T _j = 100° C		
OM5204XX	50	1.1 V @ 15 A	0.90 V @ 15 A	20 μA	1.0 mA	35 nsec	2.0
OM5205XX	100						
OM5206XX	150						
OM5218XX	200						
OM5219XX	300	1.35 V @ 15 A	1.15 V @ 15 A	20 μA	1.0 mA	50 nsec	1.8
OM5220XX	400						
OM5235XX	600						

(1) Pulse Test: Pulse Width = 300μs, Duty Cycle 2.0%. (2) Measured in Circuit: I_F = 0.5 A, I_R = 1.0 A, I_{REC} = 0.25 A

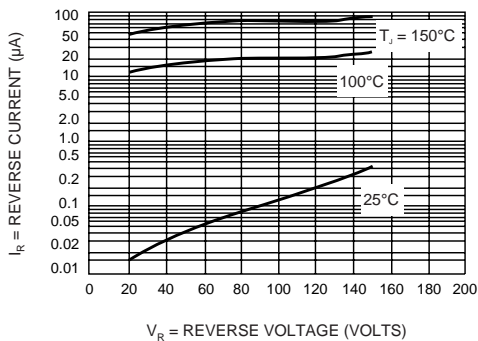
**50 V TO 200 V
TYPICAL FORWARD VOLTAGE
OM5204, 5205, 5206, 5218**



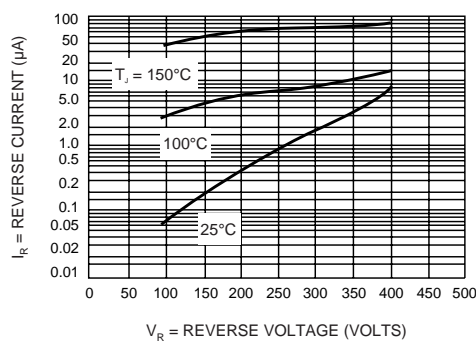
**300 V & 400 V
TYPICAL FORWARD VOLTAGE
OM5219, 5220**



**TYPICAL REVERSE CURRENT
OM5204, 5205, 5206, 5218**



**TYPICAL REVERSE CURRENT
OM5219, 5220, 5235**



3.2